

# Minnesota Children's Alliance Spatial Analysis

Prepared by



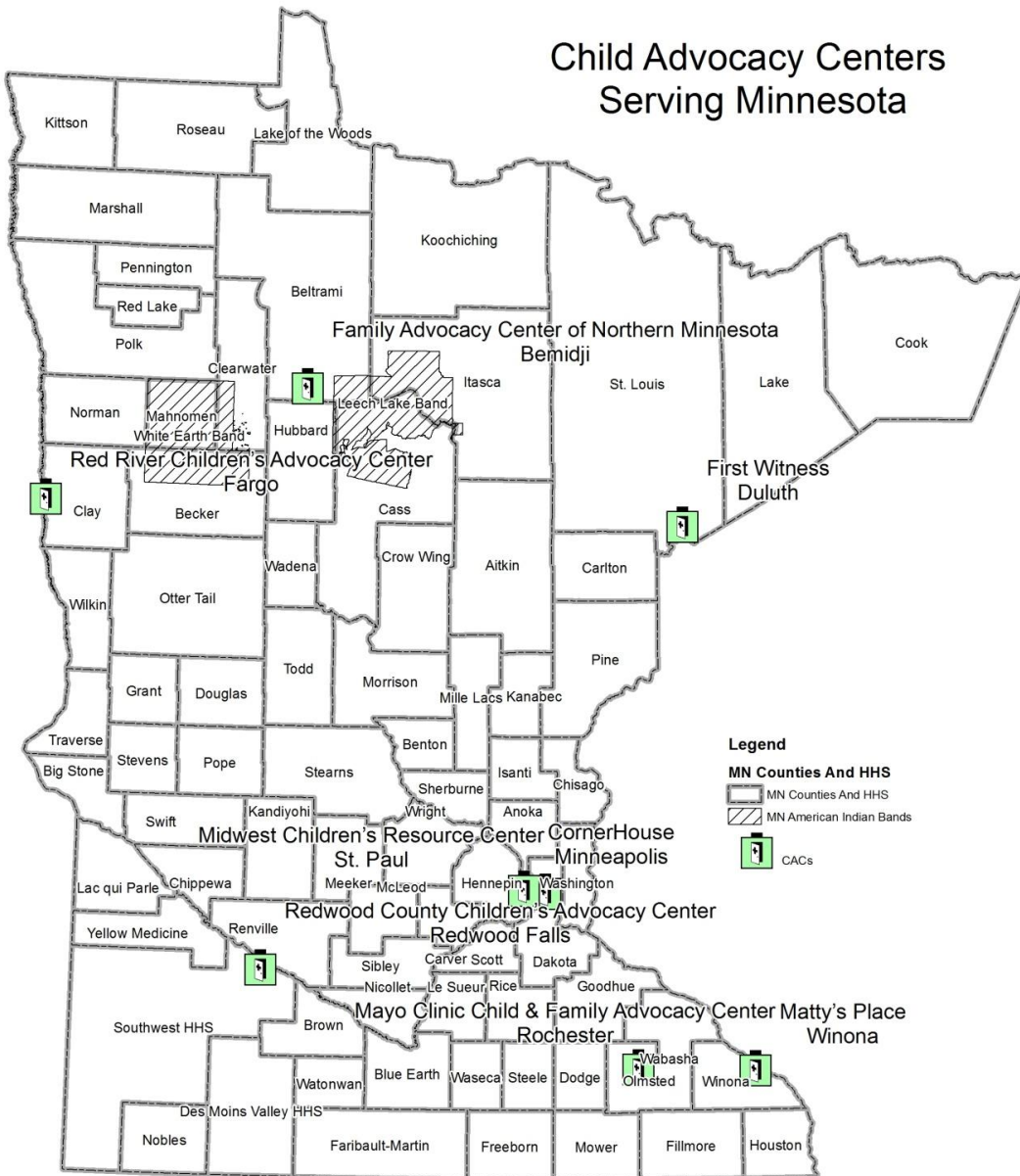
**Mapping Strategies** LLC

data analytics for practical policy solutions

# Agenda

- One Hour Drive Guideline – Access to services
- Recent Trends in Yearly Reports
- 2013 Served and Underserved Areas
- Sexual Abuse Profile of Underserved Area
- Is there a Need?

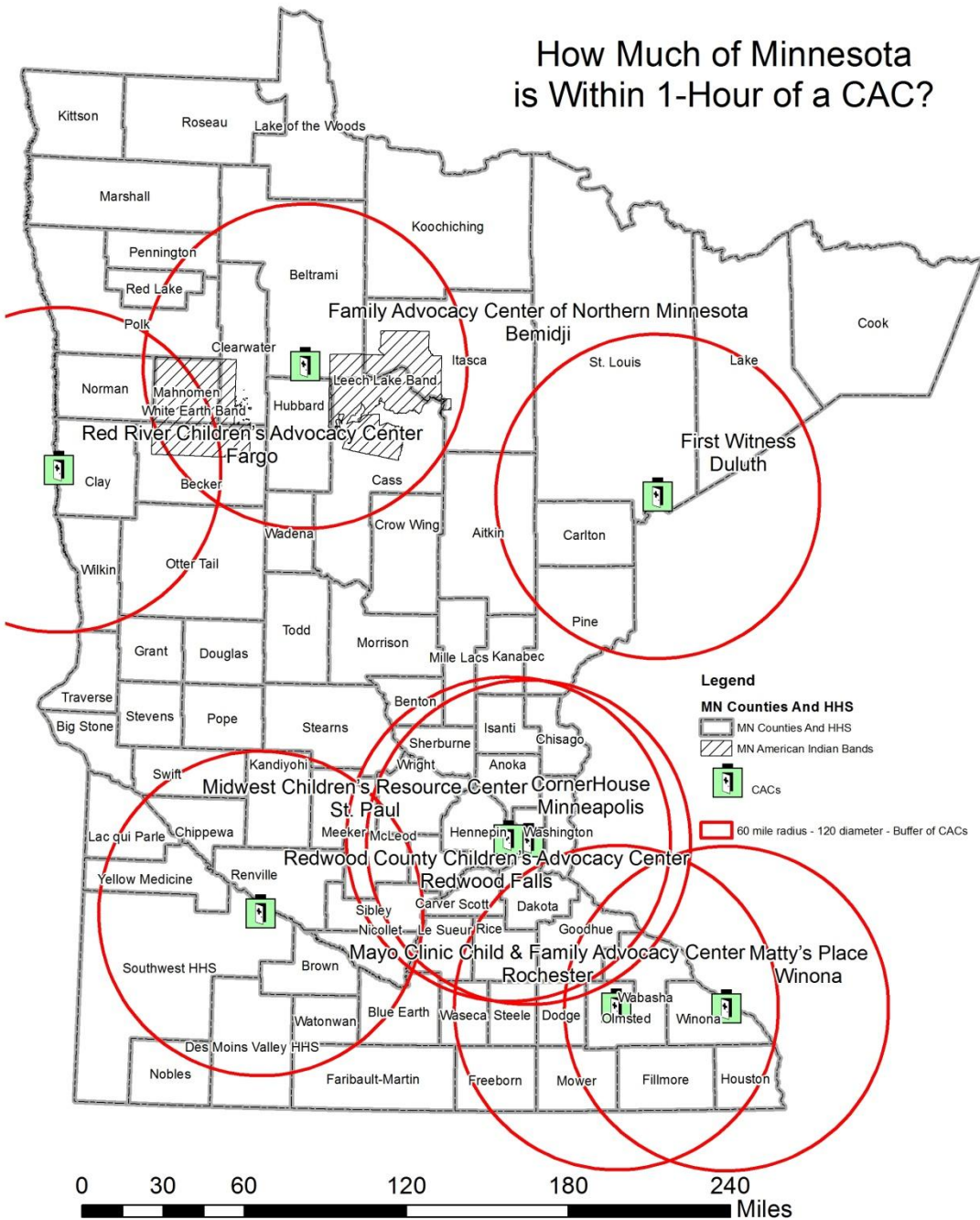
## Child Advocacy Centers Serving Minnesota



- Minnesota's Eight CACs
- 82 Reporting Jurisdictions to the State: American Indian Bands, Counties, Merged County Areas, and HHSs

0 30 60 120 180 240 Miles

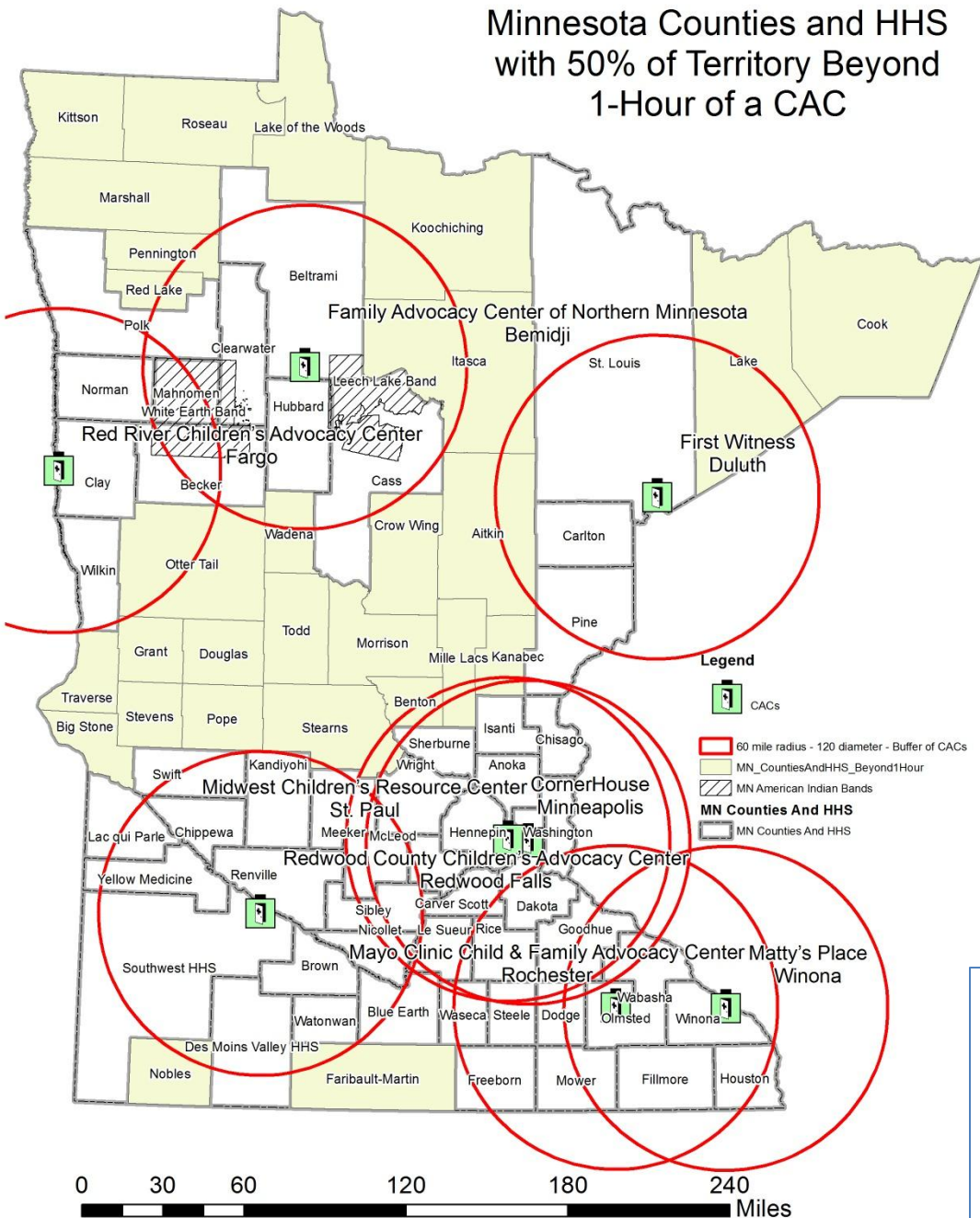
## How Much of Minnesota is Within 1-Hour of a CAC?



- Service guideline is a one-hour drive
- A one-hour drive is equated to 60 miles
- Buffers – circles of 60 miles from center to edge or 120 miles all the way across – visually approximate the served area

## Minnesota Counties and HHS with 50% of Territory Beyond 1-Hour of a CAC

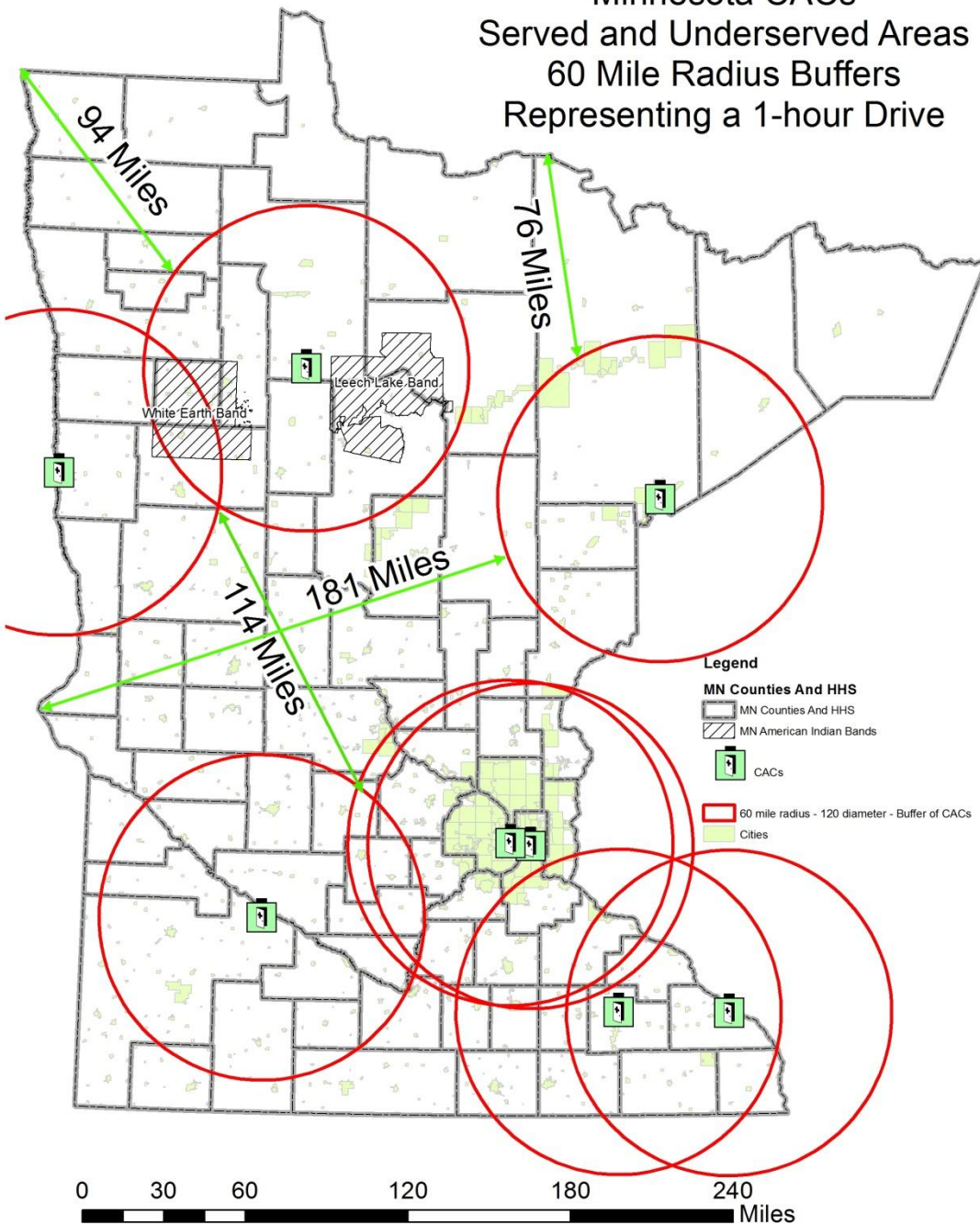
- 28 of 82 Reporting Entities have more than 50% of their territory over one-hour away:



Aitkin	Marshall
Benton	Mille Lacs
Big Stone	Morrison
Cook	Nobles
Crow Wing	Otter Tail
Douglas	Pennington
Faribault-Martin	Pope
Grant	Red Lake
Itasca	Roseau
Kanabec	Stearns
Kittson	Stevens
Koochiching	Todd
Lake	Traverse
Lake of the Woods	Wadena

The entities in the table, have a population of **155,745 children under the age of 18** according to the 2013 estimates from Minnesota DHS.

Minnesota CACs  
Served and Underserved Areas  
60 Mile Radius Buffers  
Representing a 1-hour Drive

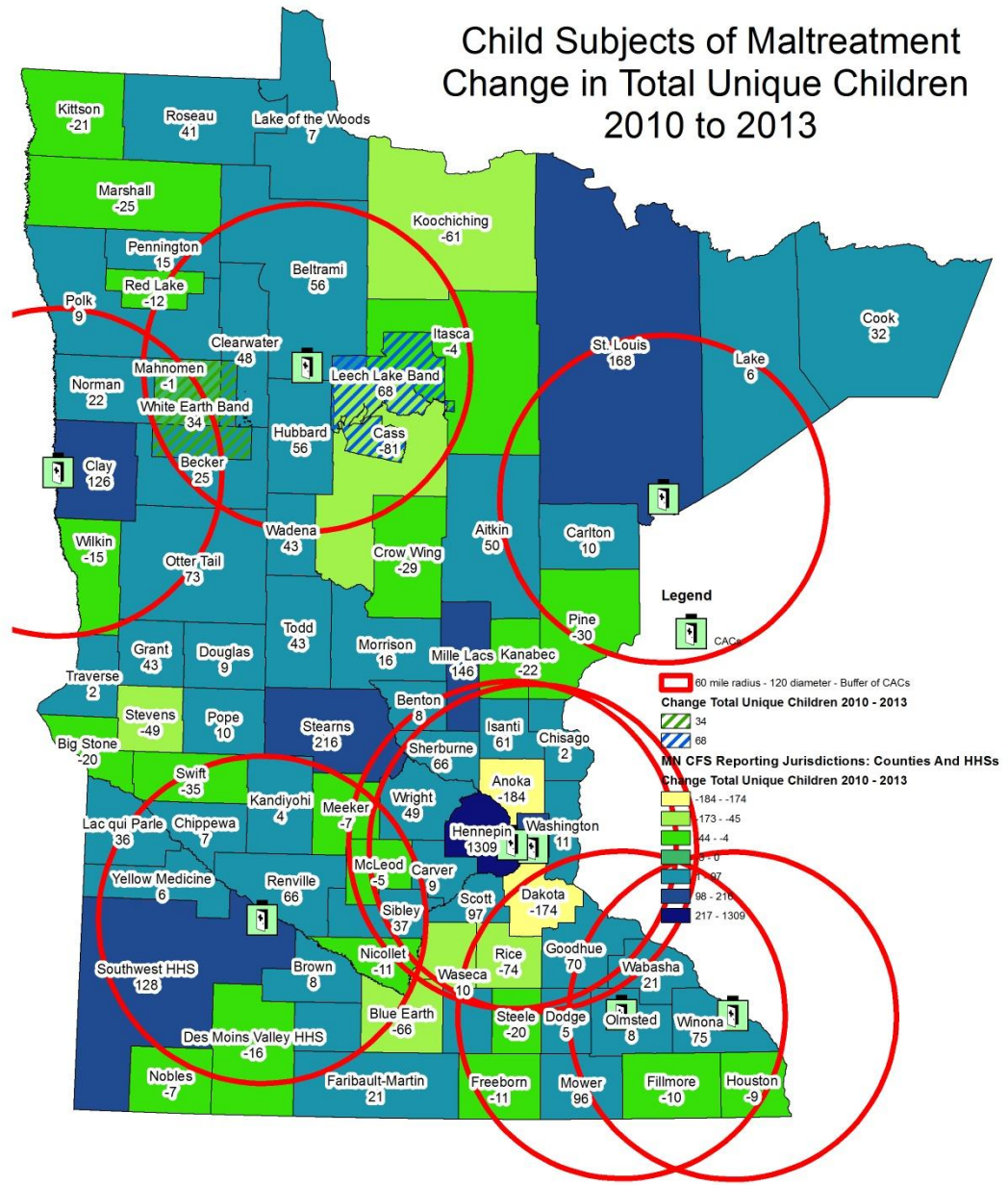


- One Full Service Area (Circle) and Two Half Service Areas (Circles) to fill the Underserved Space
1. The middle of the State has an area that could accommodate a 120-mile buffer with nearly no overlap of other service areas
  2. The Northwest corner has an area over the 60 mile radius
  3. Likewise the North central portion of the State has an area over the 60 mile radius

# Neglect and Abuse Data Over Time

- When using data for decisions, it needs to be profiled:
  - Are the data consistent or volatile over time?
  - One doesn't want to locate in an area of declining need or where there is only a random spike
- Longitudinal comparison of DHS data from Minnesota's Child Welfare Report 2010 – 2013

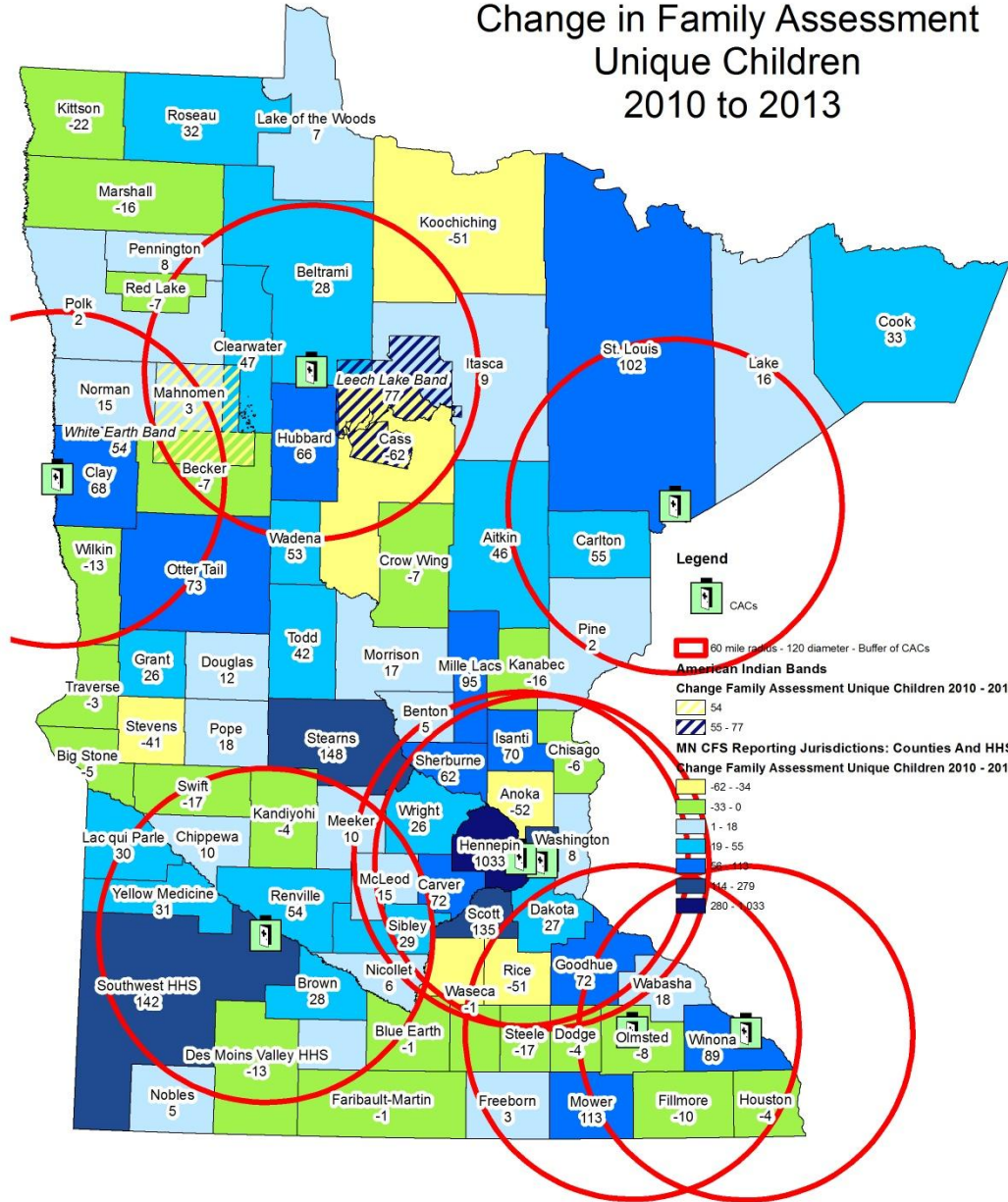
## Child Subjects of Maltreatment Change in Total Unique Children 2010 to 2013



- For easier visualization any blue on the map is an increase
- In Underserved areas 18 of the 28 counties have experienced an increase in unique children over time
- Most of the middle of the state experienced an increase
  - Stearns and Mille Lacs had large increases for this and other longitudinal categories

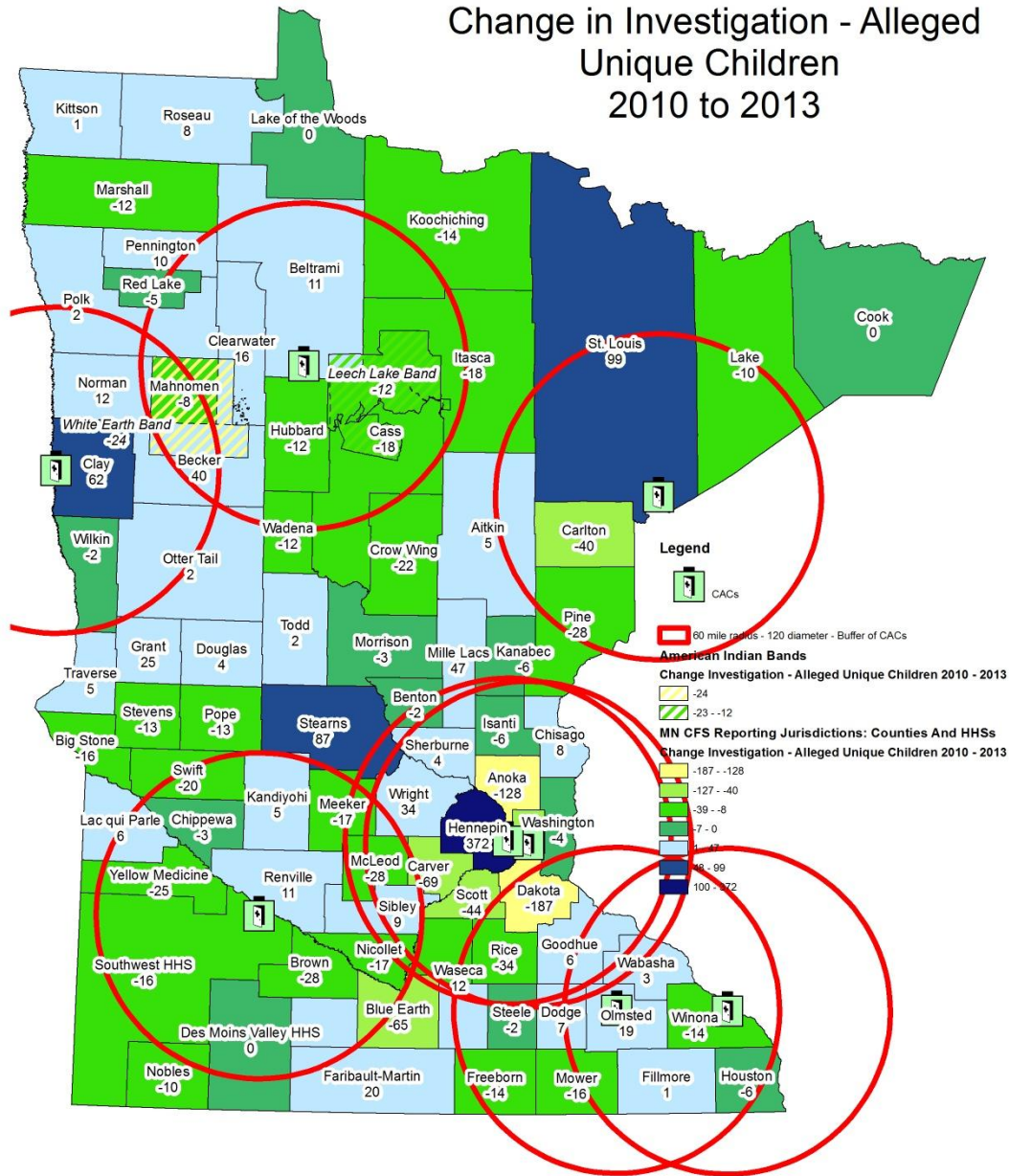


# Child Subjects of Maltreatment Change in Family Assessment Unique Children 2010 to 2013



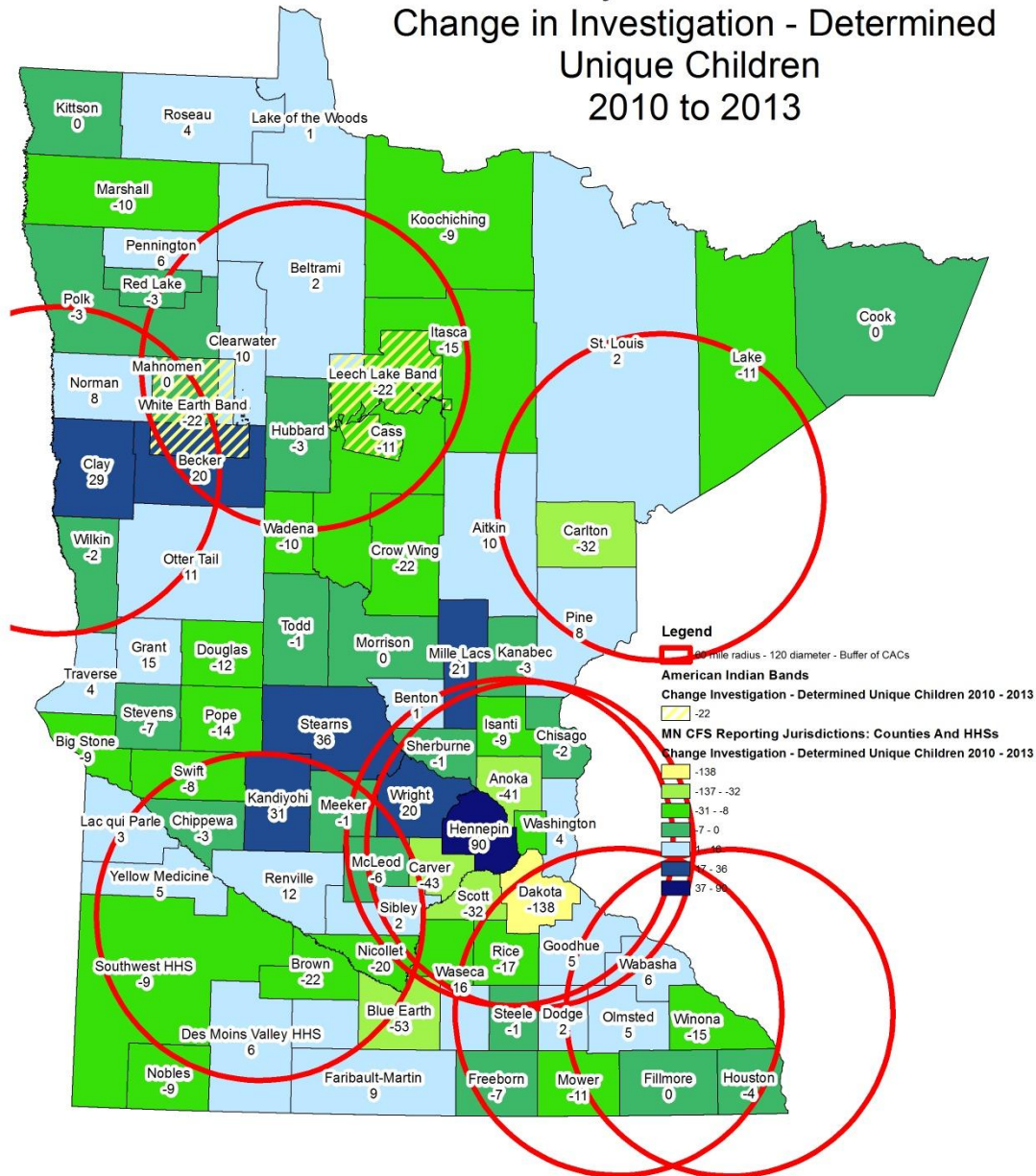
- Family Assessment equals work load
- Nearly identical to previous map in regard to increases per Counties, HHS, & Bands

# Child Subjects of Maltreatment Change in Investigation - Alleged Unique Children 2010 to 2013



- Regardless of distance from a center there are increases in investigations
- Comparing the 2 areas, Underserved and Not, 12 of the 28 entities had an increase and 24 of the 54 entities had an increase.
  - The two areas have similar growth, similar need, and different levels of access....

# Child Subjects of Maltreatment Change in Investigation - Determined Unique Children 2010 to 2013

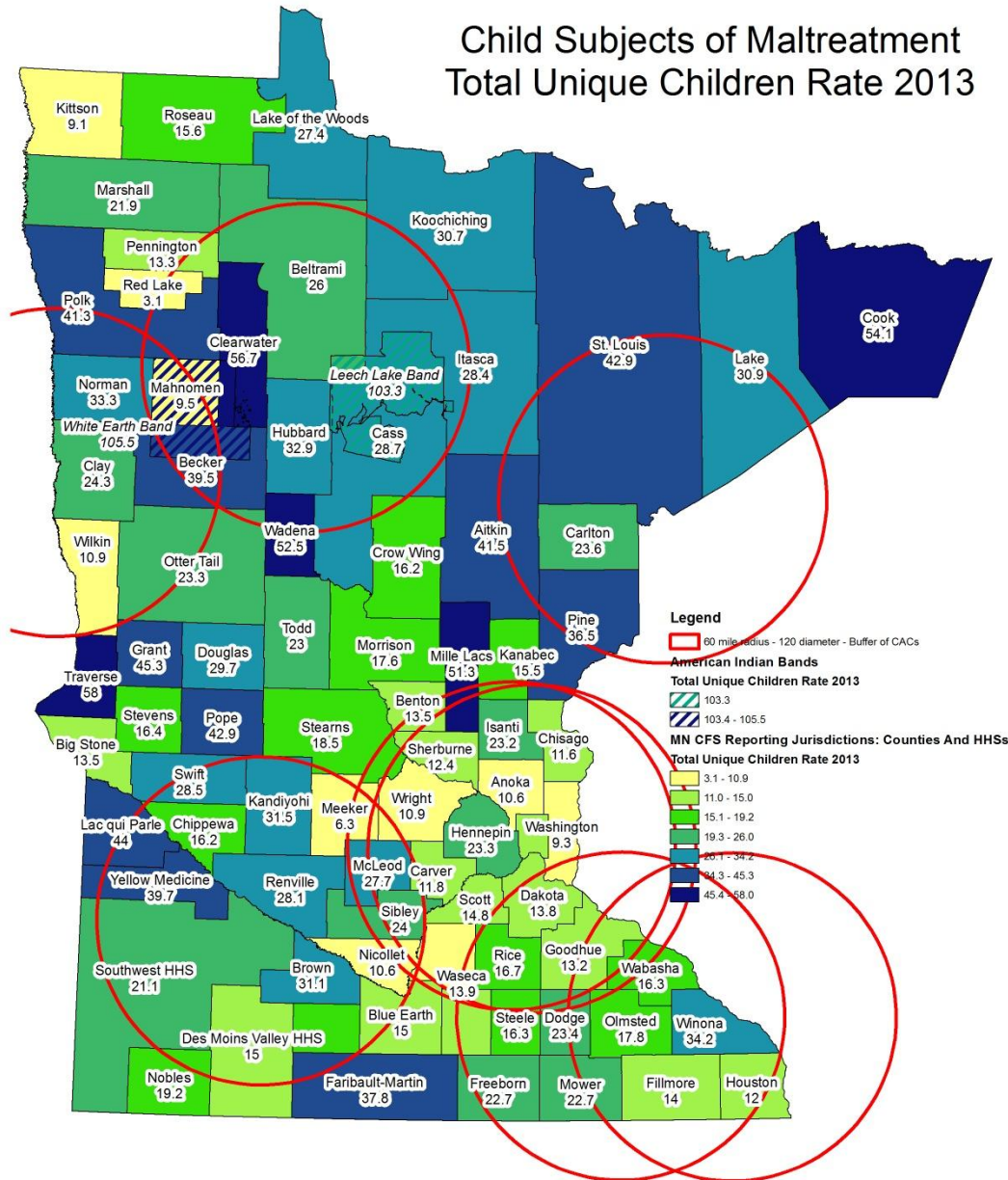


- The Underserved Area has many similar characteristics to the area closer to CACs over time, while having less access.

# Comparative Data on Underserved Area

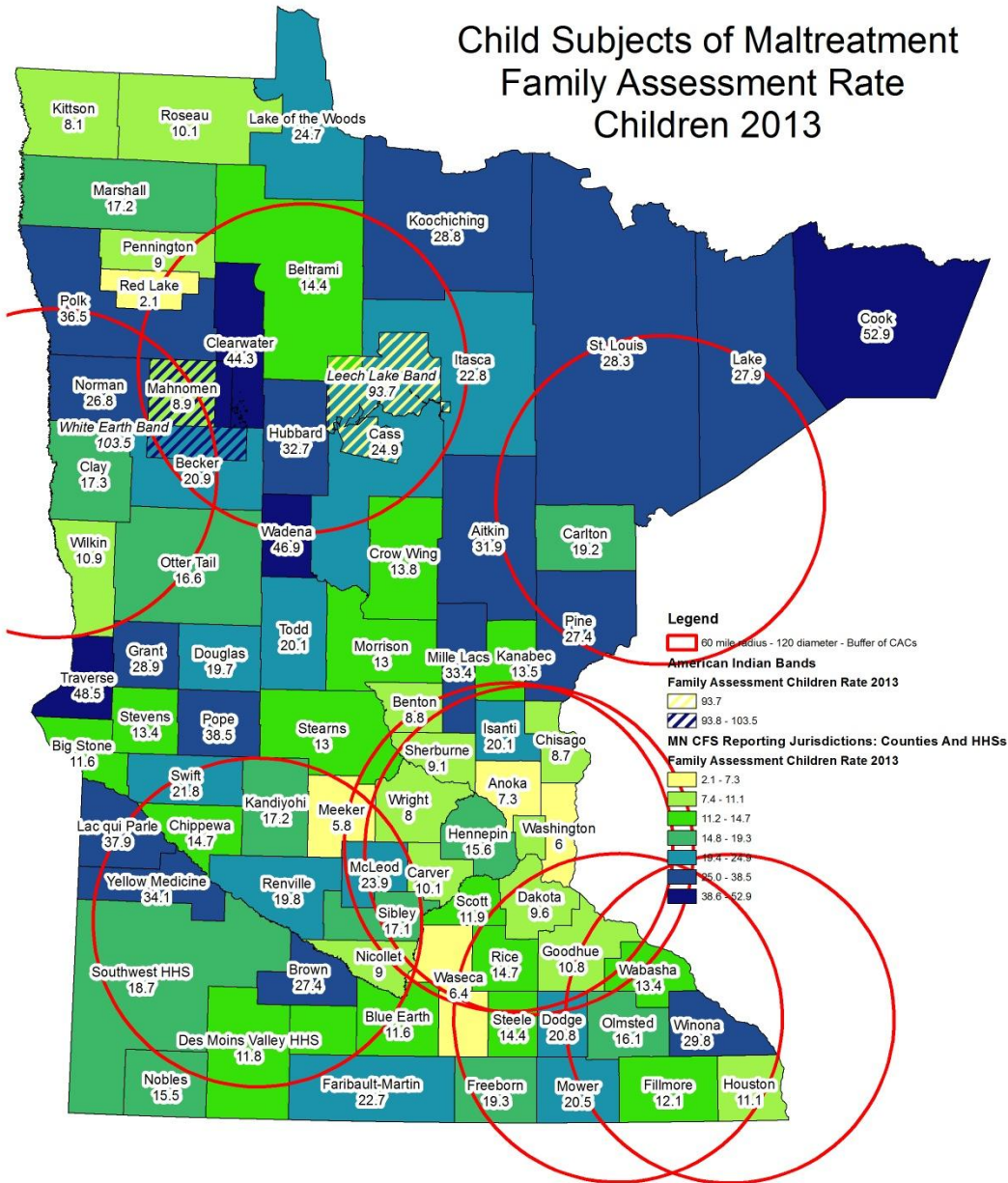
- Will use most recent data – 2013
- Will use ratios for statewide comparison – Per 1,000 Children Rate
- How does the area beyond a 1-hour drive compare to those areas closer to CACs
- Access at the same rate is a perennial public policy equity question

## Child Subjects of Maltreatment Total Unique Children Rate 2013



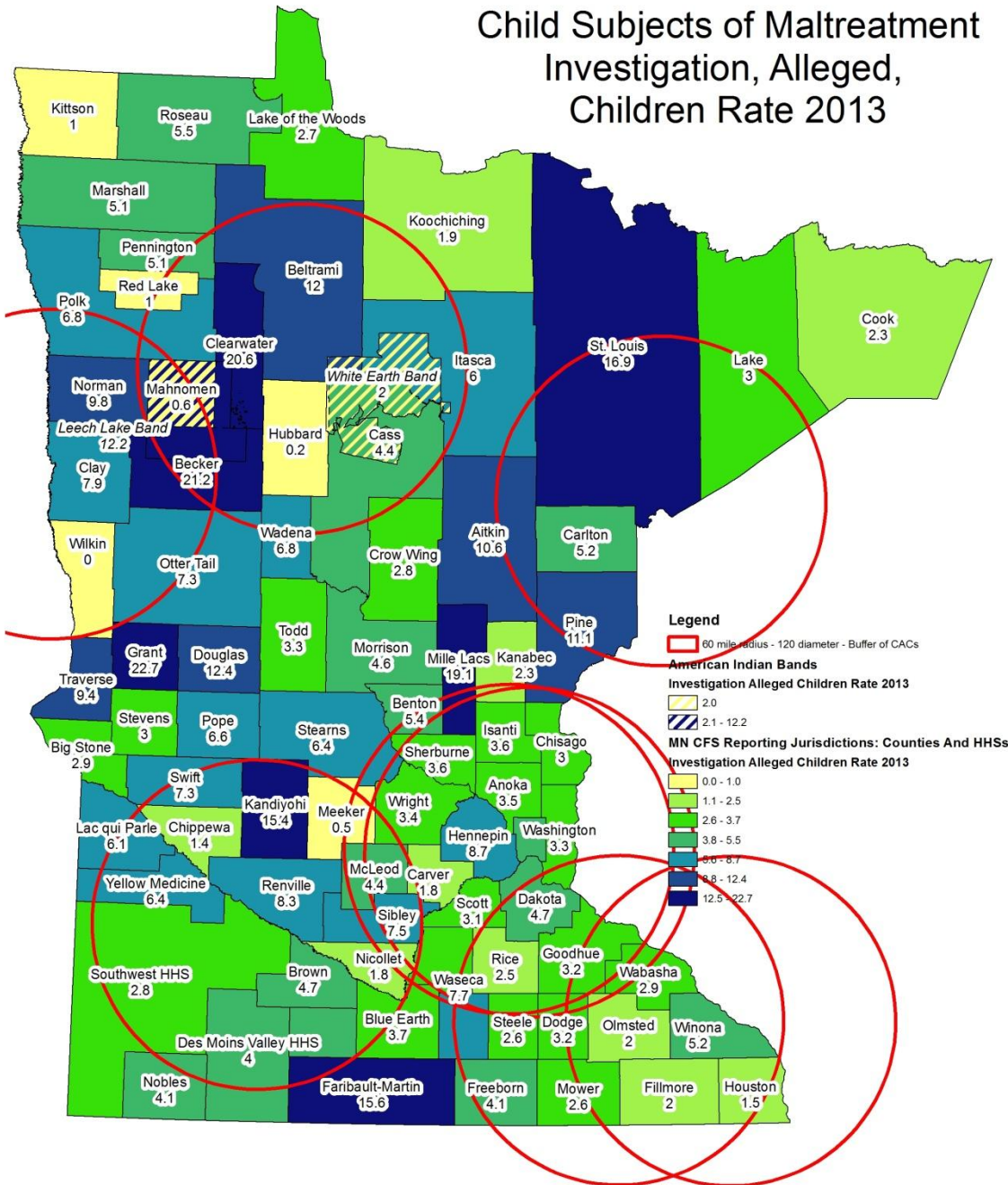
- After the American Indian Bands, 9 of the 10 Counties with the highest rate have all or a portion of their territory beyond 1 hour
- St. Louis County also has a high number, third, as well as a high rate.
- Mille Lacs is 14<sup>th</sup> overall in number, in addition to its high rate

## Child Subjects of Maltreatment Family Assessment Rate Children 2013



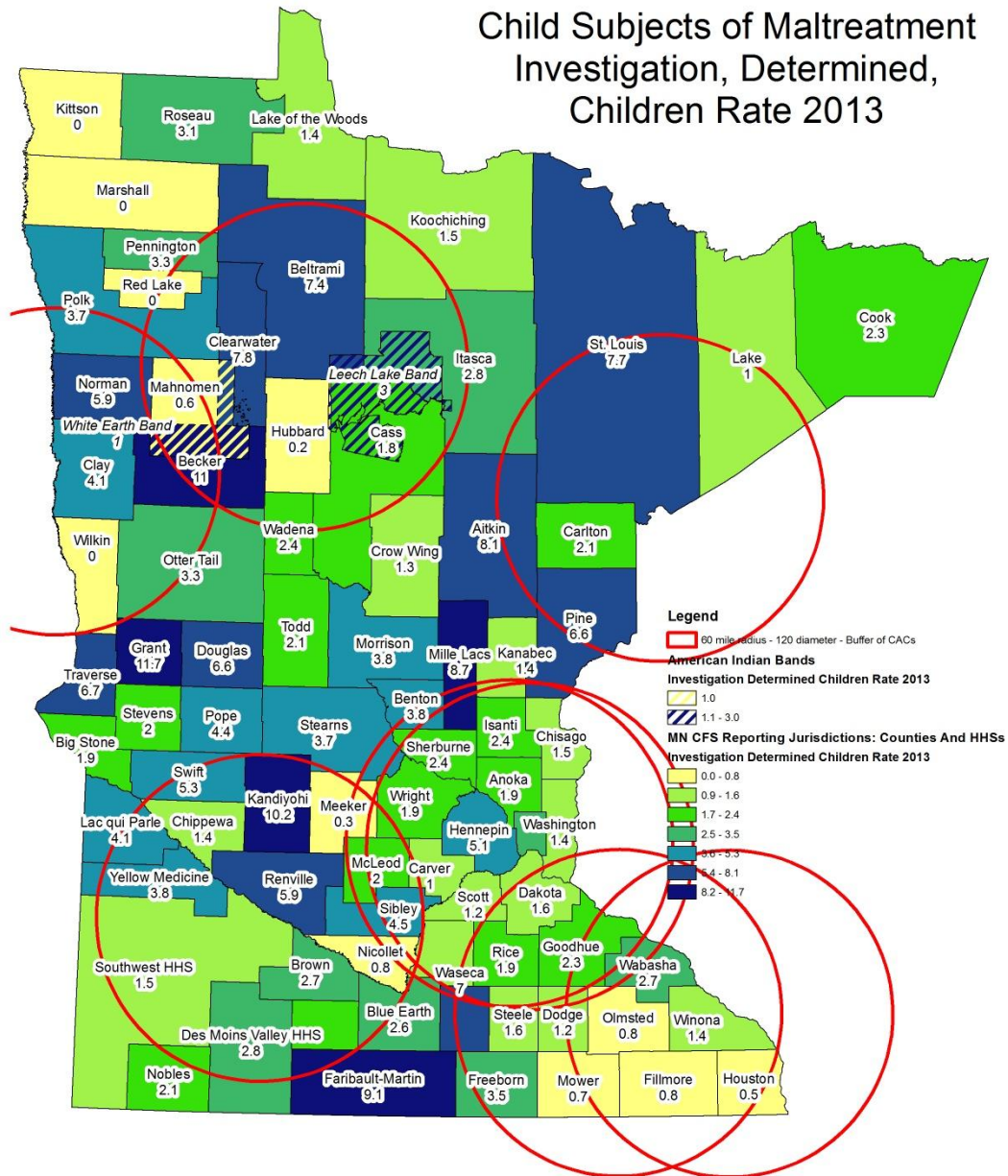
- After the American Indian Bands, 13 of the top 20 counties have all or a portion of their territory in an underserved area
- It appears those underserved counties use the Family Assessment at a higher rate

## Child Subjects of Maltreatment Investigation, Alleged, Children Rate 2013



- The 1<sup>st</sup>, 4<sup>th</sup>, 5<sup>th</sup> and 6<sup>th</sup> counties (HHS) with the highest rate of allegations have all or a portion of their territory in an underserved area
- Allegation investigation, requires more specialized, trained resources

## Child Subjects of Maltreatment Investigation, Determined, Children Rate 2013



- The Underserved Areas and the Counties contiguous to the White Earth Band have the highest rate per 1,000 children for Determined Maltreatment
- The Southern portion of the State and the Twin Cities are much “greener” and “yellower” on the continuum in the legend and have lower rates



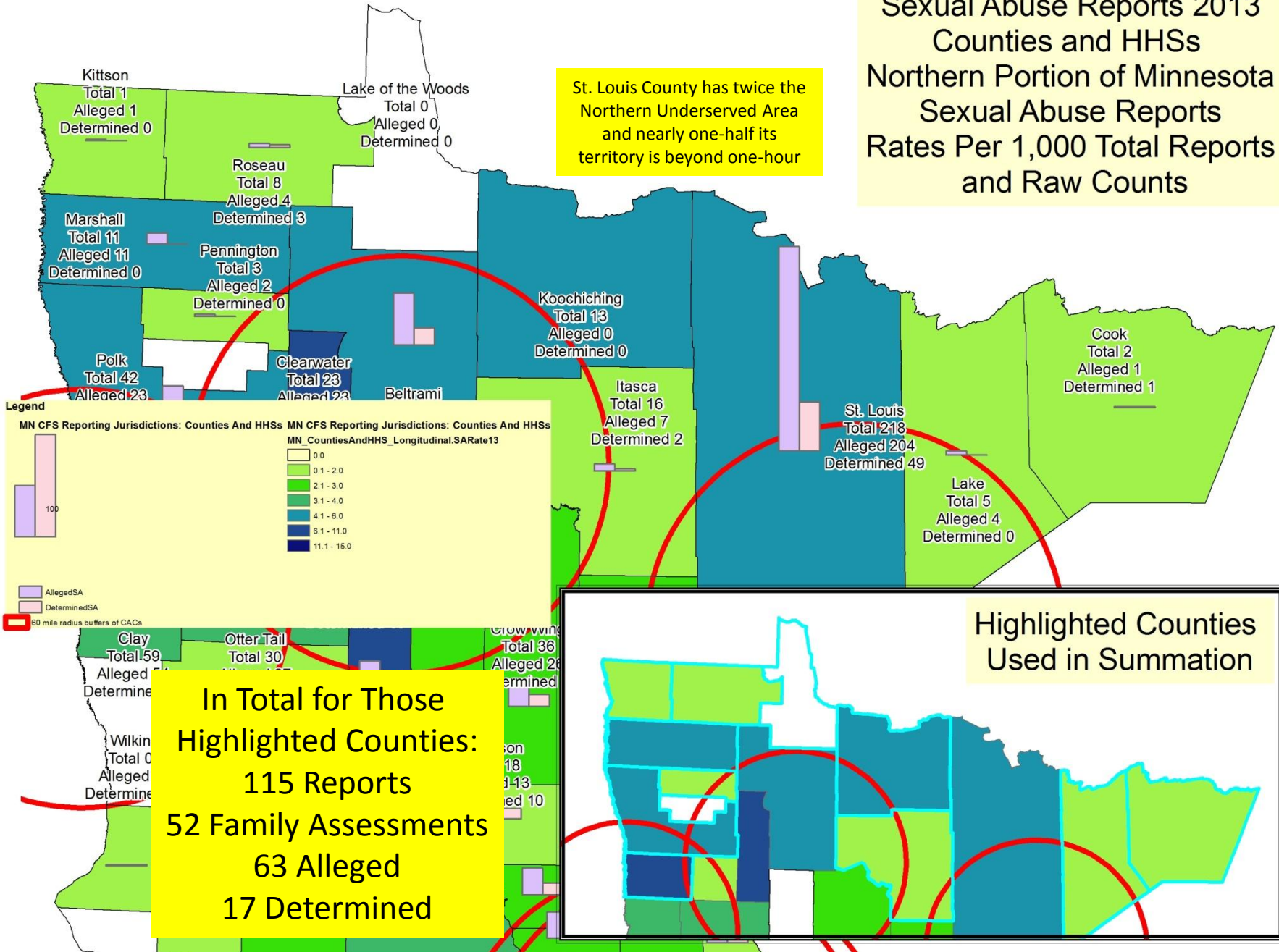
# Underserved Area Sexual Abuse Statistics Profile

- CACs specialize in forensic investigation and care. This is directly applicable to minor victims of sexual assault, therefore Sexual Abuse Reporting in Underserved Area will be mapped.
- Rates and Raw Numbers are presented simultaneously in the next series.
  - The bar charts of “Alleged” and “Determined” are to scale: the legend has a quantity for the largest bar; the second bar in the legend is one-half the height of the first and half the listed value
  - The labels of each county also list the total number of Sexual Abuse Reports per County.

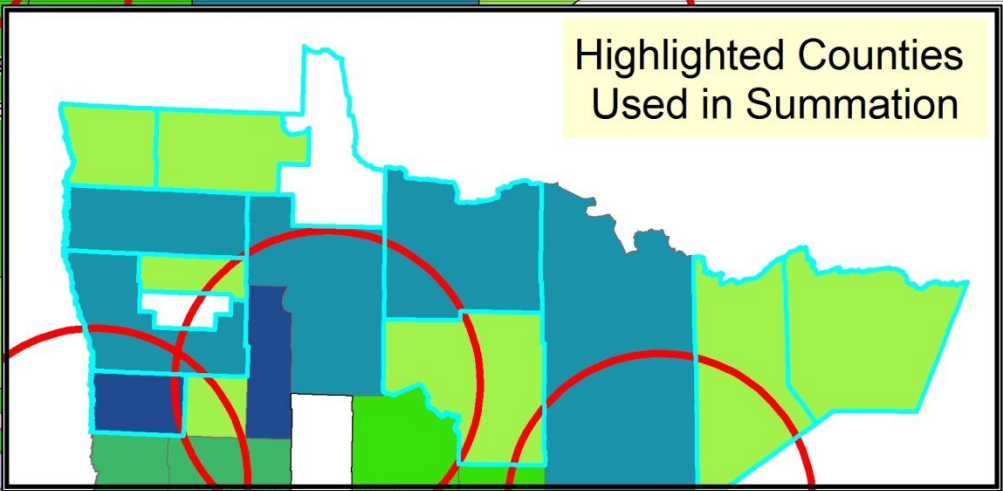


# Sexual Abuse Reports 2013 Counties and HHSs Northern Portion of Minnesota Sexual Abuse Reports Rates Per 1,000 Total Reports and Raw Counts

St. Louis County has twice the Northern Underserved Area and nearly one-half its territory is beyond one-hour



**In Total for Those Highlighted Counties:**  
115 Reports  
52 Family Assessments  
63 Alleged  
17 Determined



Highlighted Counties Used in Summation

# Is there a need in the Underserved Area?

- Using the One-hour guidance – Yes
  - There are gaps equal to coverage area that is expected for CAC services
    - Mid-state a space equal to one coverage area
    - Northern Minnesota two spaces equal to half service areas, similar to the Fargo, ND CAC
  - Approximately **155,745** children under the age of 18 in the underserved area
- There are counties trending in the beyond one-hour area:
  - Nearly all the counties in the area are trending positively, if only slightly
  - Stearns (the 10<sup>th</sup> largest County), which is completely beyond one-hour, shows the largest increases in Unique Children, Family Assessments, Investigations – Alleged, and Investigations determined.
  - Mille Lacs, a small county (39<sup>th</sup> out of 80) shows large increases in all the same statistics as Stearns over time.
  - Even though only less than half of St. Louis County is beyond a one-hour drive, since it is the 8<sup>th</sup> largest, its over all increases need to be considered.
- High rates in the area
  - The area has the highest rates for the aforementioned statistics for this year, too - #1
  - Two of the three counties noted for large number increases over time, Mille Lacs and St. Louis, also have high rates in 2013: a bad combination
- Sexual Abuse
  - Midstate there are two counties with high rates and one with large numbers
  - Northern Minnesota – there are higher rates with lower numbers, with the exception of St. Louis County which has both large numbers and high rates
  - Geographically closer supports are need for this group